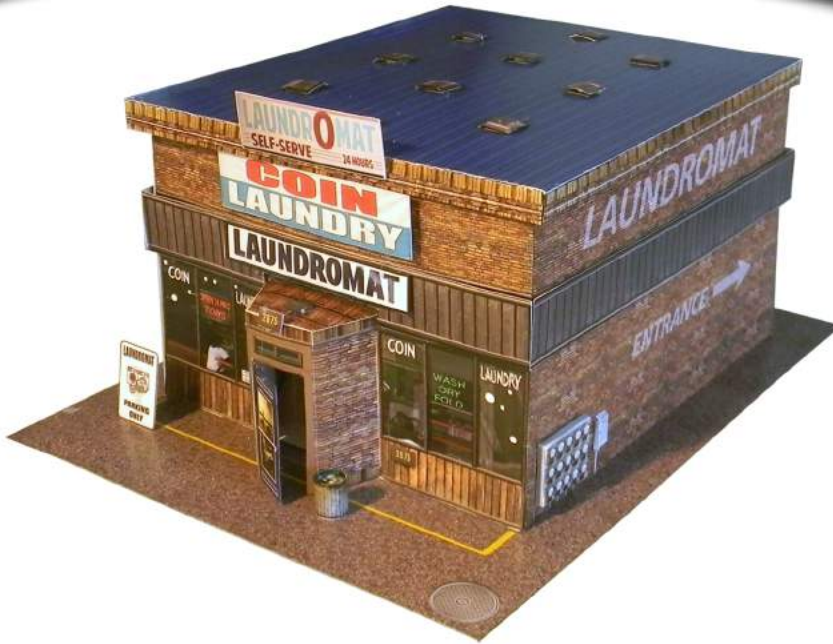




# ASSEMBLY INSTRUCTIONS

Photo Real Scale Building Kit by **INNOVATIVE** HOBBY SUPPLY

Coin  
Laundromat



- A new alternative to plastic form scale building models!
- Photo Real Scale Building kits may be the most realistic kits available!
- Great for use on model dioramas, slot car, and train track layouts!
- Designed using photos of real building elements for the most realistic appearance



**STEP 1 - Collect the correct tools.** For best results, we suggest you gather at least the most basic tools you will need to complete assembly. While you may find more tools that will help you achieve outstanding results, we suggest you start with the following: Hot glue gun, scissors, variety of water based colored markers, tweezers, straight edge rulers, hobby knife, instant setting high strength hobby glue.



**STEP 2 - Empty contents of the kit, and carefully cut out all the individual parts to be assembled.** Please note that the most precise cuts you can make will result in a dramatically better looking finished project.



**STEP 3 - With appropriate color markers, detail the edges of all the parts you cut out.** This will result in a finely finished project once assembled.

**STEP 4 - Scoring.** Using a sharp hobby knife (or scoring tool) and a straight-edge ruler, make a light shallow cut into the surface of the part you wish to bend. Do not cut all the way through. This is called scoring. Scoring along lines to be bent makes bending all printed parts easier. Bend parts using the length of your straight-edge ruler. Scoring is an essential skill.





# ASSEMBLY INSTRUCTIONS

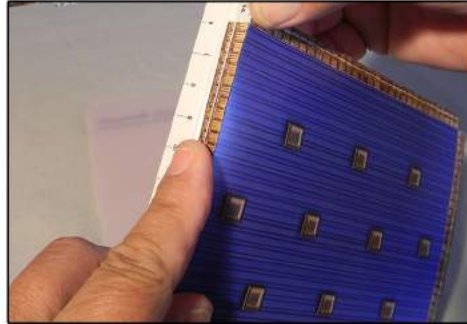
Photo Real Scale Building Kit by



Coin  
Laundromat



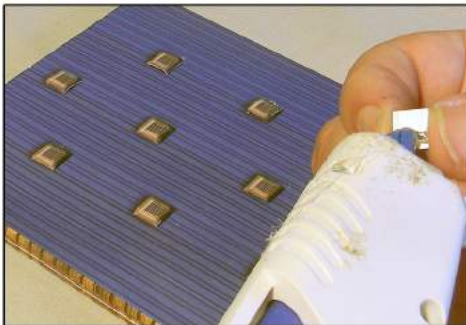
STEP 5 - Score along all edges of each building part that will need to be folded over. Scoring will result in clean, straight lines. Start with the roof of the Laundromat building.



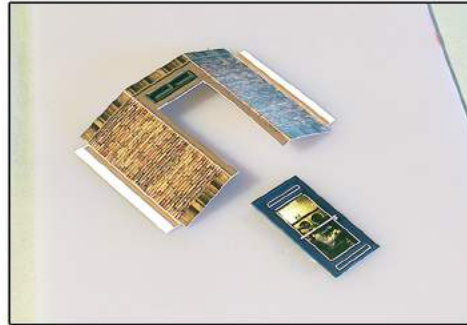
STEP 6 - Fold each side of the building roof using a straightedge, for a nice clean fold. We suggest bending a small section at a time at first, then bending the entire length of the fold more than 90 degrees, and then release.



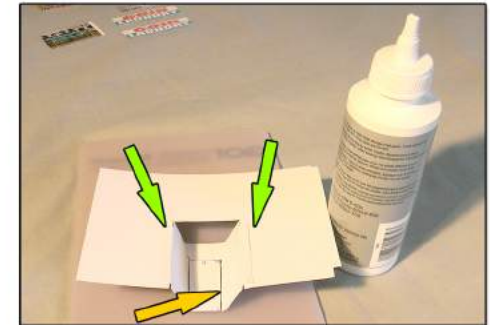
Step 7 - Fold each tab at the corners of the building's roof, then apply a small amount of white hobby glue, and join together. Hold until the glue dries, and then release. Place some drops of hot glue at various points on the inside roof line to help reinforce the roof



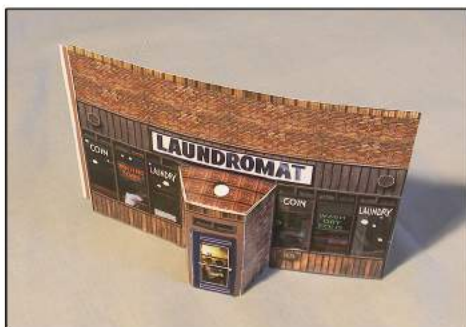
STEP 8 - Score/fold all edges of each roof vent and place a drop of hot glue on the back of each one. Allow to cool briefly, then place on the roof directly over the roof vent placement guides.



STEP 9 - Score and fold tabs on outside edges of front entrance, and cut out the front door as shown. Remember to use a color marker to color the edges of all building details for dramatic realism!



STEP 10 - On the back of the front wall, place some white hobby glue on the edge tabs (green arrows) of the front entrance, hold in place until glue dries. Next, place a piece of clear tape on the back of the door and door frame to create a working door hinge (yellow arrow).



Step 11 - Using white glue, apply some to the inside of front entrance roof, and hold in place, let dry and release.



Step 12 - Score and fold edge tabs of front entrance Illusion Room as shown.

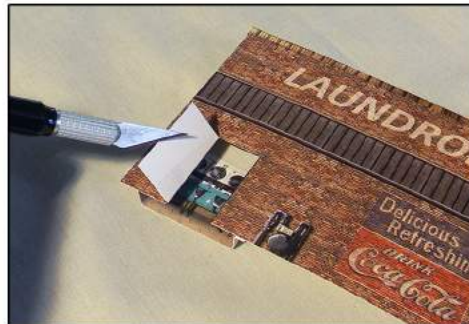


Step 13 - Using clear tape to create door hinges, apply door to building panel, then use white hobby glue to connect Illusion Room





STEP 14 - Using a hobby knife, cut out side doors, color all edges with water based color markers, and apply a piece of clear tape to the back of the door and inside wall to create a working door hinge.



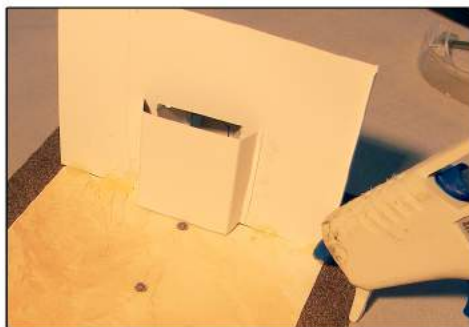
STEP 15 - Using white hobby glue, apply the Illusion room to the inside wall, so you can see inside details when you open the side door from outside.



Step 16 - As in previous steps, on the back wall cut out delivery area double doors with a hobby knife. Use a color marker to detail all edges, then apply two pieces of clear tape to the back side of these doors, and inside walls to create working doors.



STEP 17 - Apply white hobby glue to the sides of the delivery area Illusion Room, and hold in place until the glue dries, then release. The end result will look like this.



STEP 18 - Starting with the front wall, carefully line up the wall to where it should be. Apply one drop of hot glue to attach this wall to the base of the model. Hold in place until glue is cold. Repeat these steps until wall is in place.



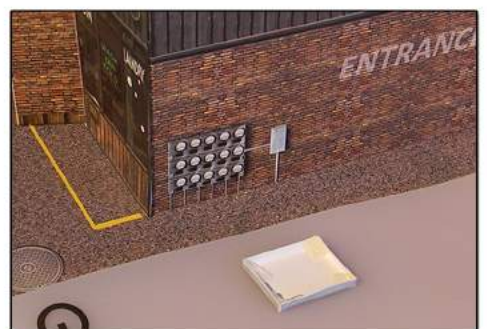
STEP 19 - Apply some white hobby glue to the tabs which join the side wall to the front wall. Hold in place until the glue dries, then release. As in previous Step 18, attach the wall to the model base one hot glue drop at a time.



Step 20 - Repeat the same steps to attach the next wall. Use drops of glue to attach walls to the base of the model.



Step 21 - Line up and attach the last wall using same aforementioned techniques.



Step 22 - Score/fold the edges of optional electrical boxes, and use hot glue drops to hold together.





# ASSEMBLY INSTRUCTIONS

Photo Real Scale Building Kit by



Coin  
Laundromat



STEP 23 - Apply a drop of hot glue to the back of the electrical meter boxes, and wait for about 10 seconds then place on the wall of the building. Hold in place until the glue cools, then release.



STEP 24 - Cut/score/fold large waste container as shown in picture. Next, hold the ends together so that all sides are at 90-degree angles to each other, and apply a drop of hot glue in each corner then hold until the drop completely cools.



Step 25 - Cut out both sides of waste container cover. Apply a small piece of clear tape on one side to use as a real working hinge. Apply other side of tape to inside of waste container, then the join both sides of the cover together.



STEP 26 - For garbage cans, cut out each piece and curl the main body of the container as shown in this picture. Using white hobby glue, place a small amount on inside edge of trash can and join together. Hold until glue dries



STEP 27 - Place a drop of hot glue inside the top of the trash can, then place the round top inside as shown. When the hot glue cools completely, the finished trash cans should look like this.



STEP 28 - This scale building kit offers many different optional features - like awnings that can go above doors and windows. To use one, cut it out with scissors, fold the top edge over, apply a small amount of hobby glue, and place it on the building wall.



Step 29 - Place the finished roof on top of the building



Step 30 - Optional: 3D siding. Apply medium size drops of hot glue, allow to cool 10 seconds, and apply before cold



Step 31 - Apply any of the optional signage wherever you think is most fun or looks the best.





# ASSEMBLY INSTRUCTIONS

Photo Real Scale Building Kit by



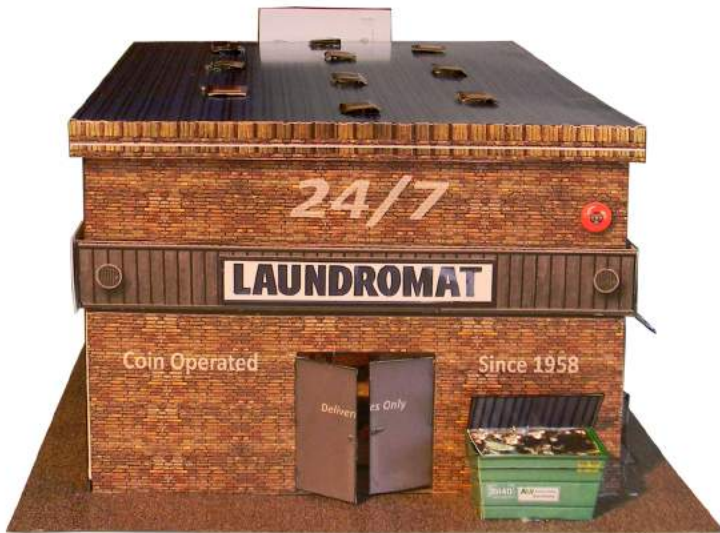
Coin  
Laundromat



Front of Laundromat



Left side of Laundromat



Back side of Laundromat



Right side of Laundromat