

QUONSET HUT PHOTO-REAL BUILD KIT

by *Innovative Hobby Supply*

Making Traditional Hobbies Better!

INSTRUCTIONS FOR:

Kit BK 4800 "Quonset Hut" Build Kit ~ 'O' scale

Free replacement parts are available simply by calling 866-712-4059.

Includes two (2 ea.) Ultra Sign sample sign posts.

Views of the completed "Quonset Hut" build kit shown below are for reference purposes and as an aid in assembly.



Front assembly view



Front detail view



Front three-quarters view



Rear three-quarters view

Innovative Hobby Supply

11610 Jay St. NW, Minneapolis, MN 55448

Customer Service: 866-712-4059 ~ email: info@innovativehobbysupply.com

INTRODUCTION

Please read these step-by-step instructions thoroughly before you undertake any cutting or assembly. Then follow the simple step-by-step instructions. This build kit is a medium skill-level kit in our **Photo Real Building Kits** product line. Assembly time is approximately 2 hours. With just a little patience and the right tools, this amazing kit can be constructed by any hobbyist, offering a more realistic-looking model than painted plastic forms. Printed on our exclusive, high-definition 'Flex Stock' material, these kits are very rugged and will provide many years of enjoyment on your train layout, slot car track, or diorama.

After you've read through the assembly instructions once, start again at the beginning and follow the steps to cut and assemble the model. We strongly recommend using a hot-melt mini-glue gun for assembling this kit. (Mini-glue guns are available at your local craft store, as well as many hardware stores and drug stores, for less than \$5.00.) Hot melt glue is easily controlled and sets-up fast, which greatly speeds-up the assembly time since you don't need to wait for the glue to dry. **Use hot-melt glue sparingly:** apply an amount just sufficient to tack the items together. You can reinforce the bond surfaces with a final bead of hot glue – or with white glue – once you are satisfied with placement of component pieces.

These instructions include plenty of clear, full-color photographs to make assembly easier. As with all model assembly, some patience is required. The skills acquired in constructing your first building kit will carry over to our other kits, which will make it easy to add as many buildings to your layout as you desire – saving you time and money and giving you better results than for most molded plastic kits. Enjoy the most innovative and realistic scale-model building kits available.

GETTING STARTED

IMPORTANT: The most important skill in getting a good result is the technique of 'scoring' the material where indicated (fig. 1). Scoring is simply making a shallow cut through the top layer of the paper with a sharp hobby knife (e.g., an X-acto knife) while using a ruler or other straight edge.



Figure 1 - Scoring the material.

This technique is simple to learn, yet vital to getting a perfect fold – even on small parts! Using this technique helps to ensure a beautiful trouble-free assembly. Without it, the folded edges tend to buckle unevenly and look bad when assembled.

Practice on a scrap piece until you have perfected your technique sufficiently to have confidence. The hobby knife should be used for scoring only! When cutting out parts completely, use a sharp scissors as this material is tough and does not cut easily with a knife. Remember to always wear safety glasses when using sharp

tools or hot glue guns. Keep all materials away from extreme heat or flames. Adult supervision is required for those under age 16.

- 1) Collect the assembly tools you will need: hobby knife, hot-melt mini-glue gun, straight-edge, scissors, tray (for separating and storing component pieces from scrap), tweezers (figs. 2-A, 2-B).

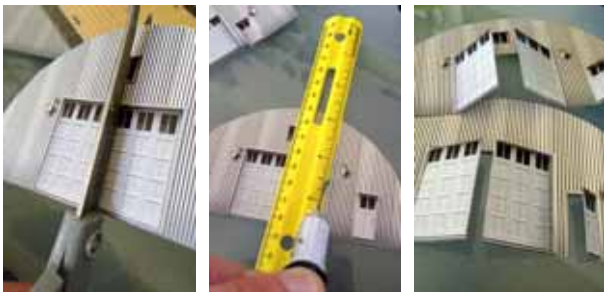


Figures 2-A, 2-B - Useful tools/materials for assembly.

- 2) Other useful tools include hobby glue (also called white glue) waterproof Sharpie-type markers in red, black, brown, green and silver for detailing edges. Clear tape is useful for temporarily holding components together from the inside areas.
- 3) Cut out the base (item 16) and set it aside (fig. 3 - next page). Cut out the walls, items 1-4. Carefully cut out the middle doors and set aside.
- 4) Using a sharp scissors, cut between the doors and along the top edge so they will open (fig. 3-A). Score the hinge area using a straight edge and hobby knife (fig. 3-B, 3-B – next page).



Figure 3 - Cut out base components.



Figures 3-A thru 3-C – Cut and score the doors to open.

- 5) Carefully detail-out all the cut edges on the door and jambs with a silver marker (fig. 4).

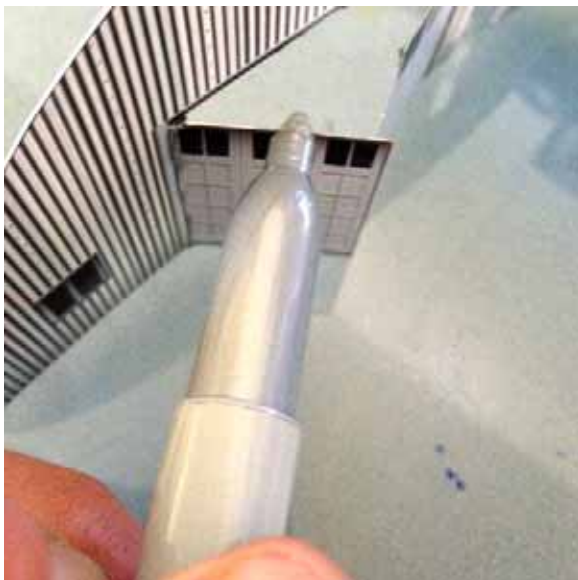
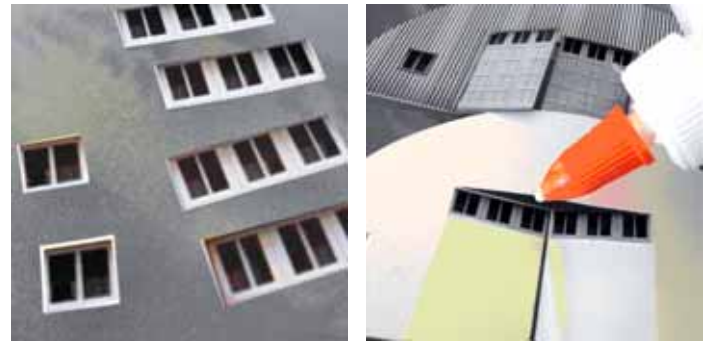


Figure 4 – Detail-out the edges with silver marker.

- 6) Cut out the inside door details and attach with a little white glue on back side. This improves the look of realism when the doors are open (figs. 5-A, 5-B).



Figures 5-A, 5-B - Cut out and attach the inside door details.

- 7) Using hot-glue, attach the front wall to the base at the bottom by first tacking one corner in place. Then do the same on the other side – just tack it in the proper position (fig. 6).



Figure 6 - Tack the corners of the front wall to the base.

- 8) Fully attach the front wall to the base from the back side by running a bead of hot glue along the bottom joint at the base (fig. 7). Be careful to avoid door area. Allow to cool.



Figure 7 - Attach the front wall to the base using hot-melt glue.

- 9) Repeat steps 7 and 8 to attach the back wall to the base (fig. 8).

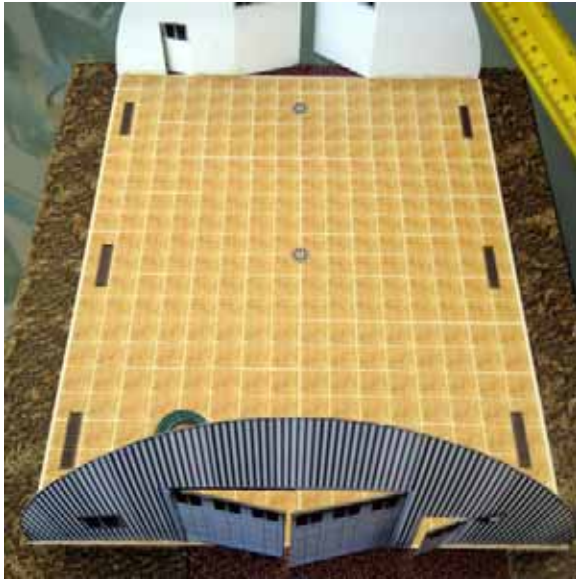


Figure 8 - Attach the back wall to the base.

ATTACHING THE ROOF

- 10) Prior to installing it, roll the roof component into a loose spindle and hold it for a few seconds (fig. 9). Unroll it and test fit it against the upright walls (fig 10). The objective is to make it easy to attach the roof by pre-forming it to drape over the front and back walls without having to force it to follow the curve. Repeat the process as necessary until you get a good test fit.



Figure 9 - Roll the roof material to pre-form it.

- 11) Carefully trim the length – as needed – to ensure it will fully contact the base and walls.
 12) Use either white glue or hot-melt glue to attach the roof. Install the roof by first attaching it to the base on one side (fig. 10).

TIP: For a cleaner build, keep all of the glue on the inside surfaces of the roof and walls.



Figure 10 – First attach the roof to one side of the base.

- 13) When attaching the roof with white glue, first use a few small pieces of clear tape to hold the roof in proper position. Then seal the joints with a thin bead of white glue to attach the roof. Let the first bead of glue dry for at least 2 hours before you apply a second bead to reinforce all the joints.
 14) When using hot-melt glue, first position the roof parallel to the base on one side. Next, while maintaining an even overlap of about ¼-inch on the front and back walls, tack the roof to the base with a drop of hot-melt glue at about 1-½ inch increments from the inside, as shown in fig 10 above.
 15) Next, tack the roof to the back wall from the inside with a drop of hot-melt glue every ¼ inch. Hold and push the wall to roof. Repeat until about half of the back wall is glued to the roof.
 16) Repeat steps 14 and 15 to complete the front wall (fig. 11).

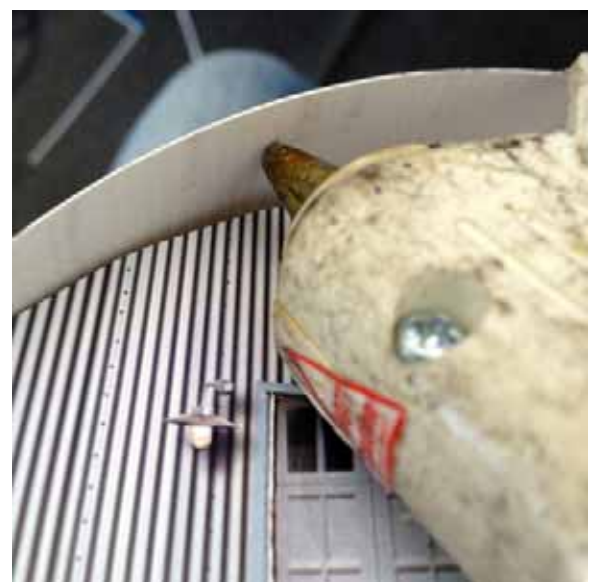


Figure 11 - Tack the roof in 1-½ in. increments.

- 17) Tack the roof to the base on the opposite side. Work along the seam slowly, letting the glue cool at the tack points as you press and hold the roof to the base for a tight fit.
- 18) Complete the front side by forcing a thin bead of glue under the roof to finish gluing the wall to the roof. Work your way around and press the wall forward through the door openings as necessary to straighten it. Apply a bit of pressure on roof-to-wall joint as the glue cools for a tight fit.
- 19) Repeat step 18 to finish the back wall.
- 20) Cut out the roof vents and detail the edge with silver marker (fig. 15).

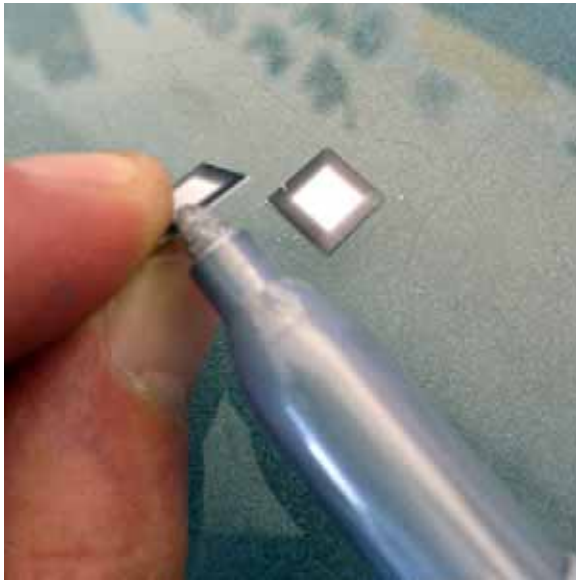


Figure 12 - Detail the edges of the roof vents with silver marker.

- 21) At this time, apply a drop of hot glue for use as a spacer about 1/16 in. high (fig. 13). The spacer provides added realism. Let the glue cool before attaching the vents.



Figure 13 - Use a drop of cooled glue for a spacer.

- 22) Using the silver marker, measure and mark two locations on the roof where you want to attach the roof vent pieces. To attach the vents, simply touch the nozzle of the glue gun to the hardened glue at the center of the drop for 2 seconds to re-melt the glue. Quickly place the vent pieces on the roof at your pre-determined locations (fig. 14).

TIP: You also can use a small length of drinking straw about ¼-inch long to fashion a pipe as an alternative to a spacer of hot-melt glue.

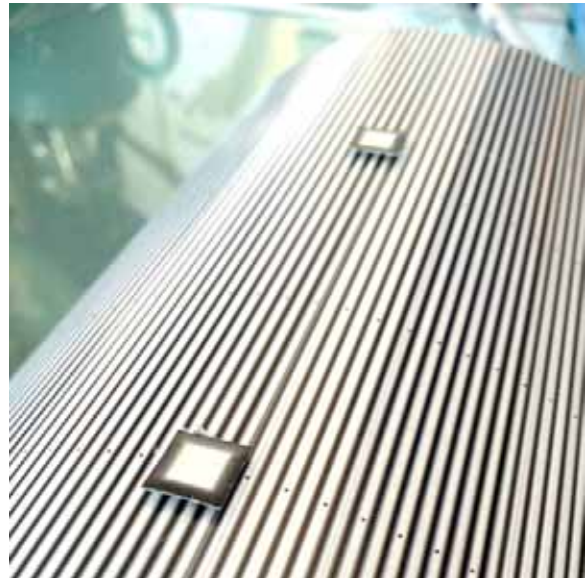


Figure 14 - Position and attach the vent pieces to the roof.

- 23) Attach the door-step pad at the front entrance using white glue (fig. 15).



Figure 15 - Attach the door-step pad.

- 24) Select any signs or other detailing items you want to use for detailing the building and base. Use the appropriate colored markers to detail-out the cut edges of the signs (fig. 15). Then attach them to the building at locations of your choice using hot-melt glue.

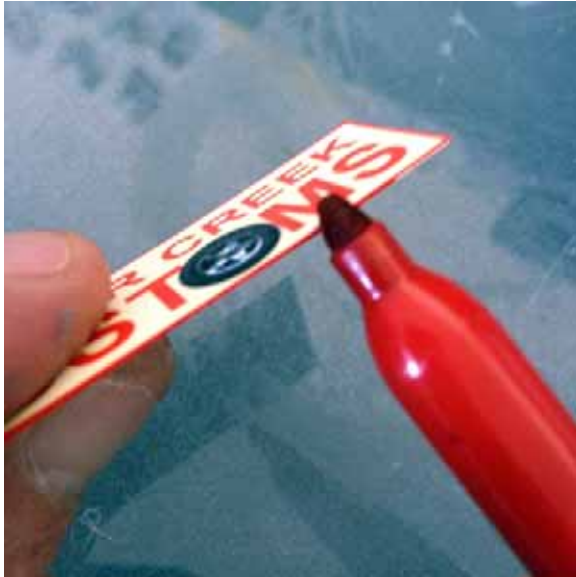


Figure 16 - Detail-out the building signs with colored markers.

- 25) If desired, use the three Ultra Sign plastic sign posts to erect road signs and attach them to the building base. Cut out the desired road signs and detail the edges with marker. Attach them to the sign posts using hot-melt glue and let cool. Using a hobby knife, trim the posts to the correct length for mounting. Then attach them to the base using a drop of hot-melt glue at the bottom of the post (fig.17).

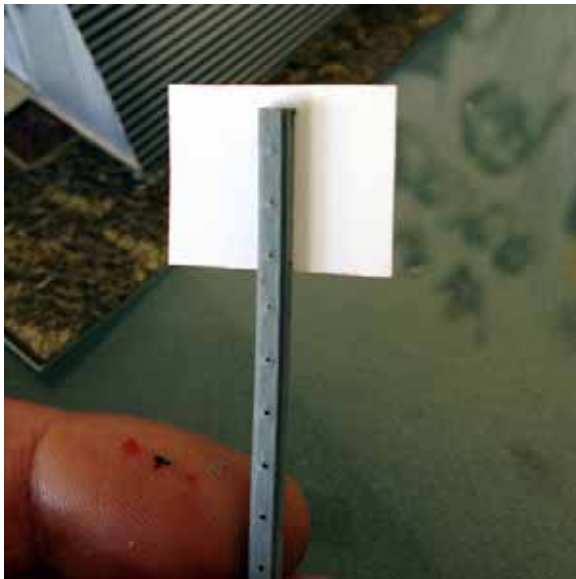


Figure 17 - Mount the sign posts to the base.

- 26) Add any desired detail items such as lichen, trees, figurines, barrels, ladders and other props.



Figure 18 - Complete Quonset Hut Build Kit.

- 27) Enjoy your new Quonset hut!

*The skills you have learned in assembling this build kit will make constructing any of our line of **Photo Real Build Kits** faster and easier. Check out our entire line of photo-realistic build kits at www.innovativehobbysupply.com*

Enter Our Photo Contest!

Would you like to show off your completed **Photo Real** build kit? Enter our photo contest and *be the first to receive our newest, unreleased build kits completely free for one year!*

We will feature the best photos of your finished assemblies and layouts. The contest ends September 1, 2013. To enter, visit us online at:

www.innovativehobbysupply.com

BK 4800 ~ “Quonset Hut” Build Kit

Footprint Dimensions: Building – 5.95 x 7.5 in. Base – 7.4 x 9.3 in.

Three sheets. Kit includes two (2 ea.) sample Ultra Sign sign-posts and two (2 ea.) standard paper clips.



- Finally, a new alternative to plastic form scale-building models.
- PhotoReal build kits may be the most realistic kits available.
- Great for use on model dioramas, slot car and train layouts.
- Easy to assemble! Full-color detailed instructions available on-line.

BK 4800



Suitable for 1/48 scale projects.

For free, detailed assembly instructions in PDF format, go to www.innovativehobbysupply.com and hover your mouse over the 'Photo Real' tab. Then under 'Scale Building Kits' will be the 'Build Kit Instructions' page. Find the instructions for your build kit and click download. If you need instructions in hardcopy, please contact us at the address below.

www.InnovativeHobbySupply.com ⇒ Photo Real ⇒ Scale Building Kits ⇒ Build Kit Instructions

Look for These Other Exciting 1/48-Scale Build Kits!

- BK 4801 Motorcycle Shop
- BK 4802 Racetrack Bleachers
- BK 4803 Garden Houses
- BK 4804 Grain Dryers
- BK 4805 Farm Buildings
- BK 4806 Ticket and Gate Entrance
- BK 4807 Sugar Creek Hotel
- BK 4808 Modern Gas Station
- BK 4809 Barber Shop
- BK 4810 Commercial Steel Garage
- BK 4811 4-Stall Pit Garage
- BK 4812 Sandstone Rambler
- BK 4813 Race Tower
- BK 4814 Fire Department
- BK 4815 Bait Shop
- BK 4816 Log Cabin
- BK 4817 Train Station
- BK 4818 General Store
- BK 4819 Drive-In Theater
- BK 4820 Roadside Diner
- BK 4821 Brick Rambler



11610 Jay St. NW ~ Minneapolis, MN 55448

www.innovativehobbysupply.com

Customer Service – Tel. 866-712-4059 • Email – info@innovativehobbysupply.com